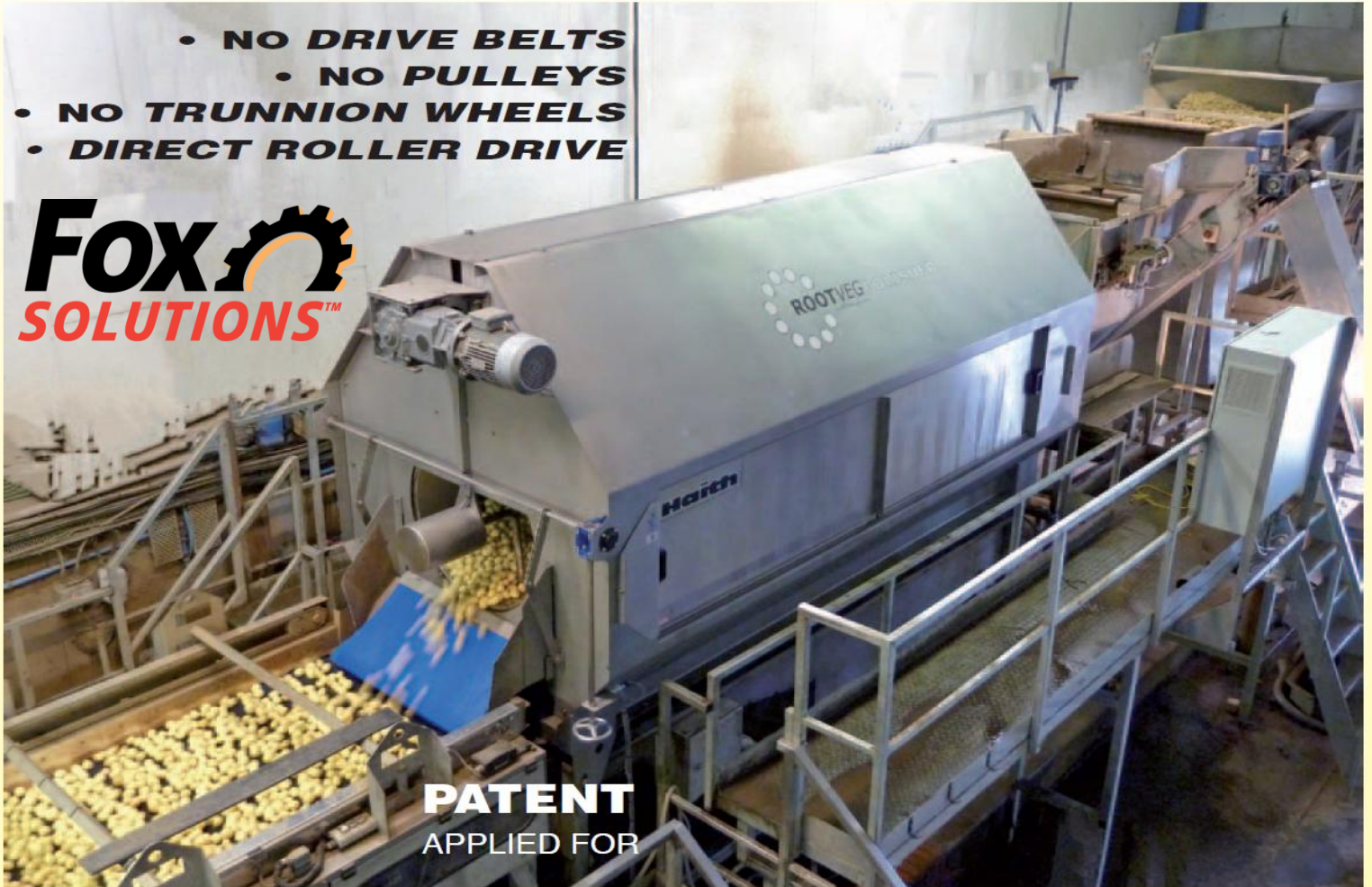


Haith

NEW - GENERATION, LOW MAINTENANCE POLISHER

- **NO DRIVE BELTS**
- **NO PULLEYS**
- **NO TRUNNION WHEELS**
- **DIRECT ROLLER DRIVE**

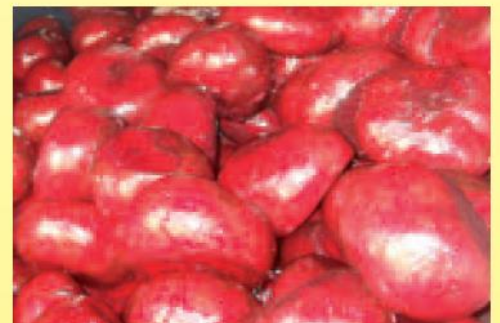
Fox 
SOLUTIONS™

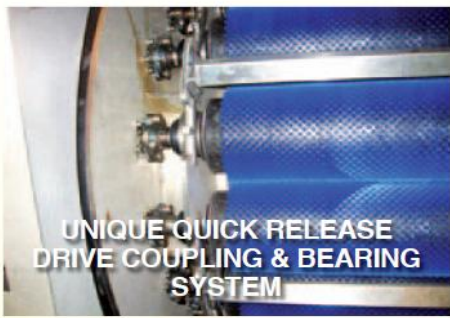


PATENT
APPLIED FOR



- Belt suspended barrel giving silent running & low maintenance
- Special Multi-Sealed bearing housing for increased life on brush rollers
- Modified control program automatically reverses brush roller direction every 8 hours for optimum brush life.
- Inverter speed control & special brush design give the ultimate in polishing
- High efficiency motors for reduced power consumption.





**UNIQUE QUICK RELEASE
DRIVE COUPLING & BEARING
SYSTEM**



**(PATENT
APPLIED
FOR)
ROTATING
MOTOR
DRIVE
SYSTEM**



UNIQUE - AIR BAG SYSTEM
To adjust barrel operating angle and
vary speed of flow through machine

- Cassette type brush roller with quick release bearing system
 - Rollers easily removable from outside of drum
 - Belt suspended barrel giving silent running and low maintenance
 - No support wheels under barrel
 - Separate inverter speed control on barrel and brush rollers
- PROVEN BRUSH TECHNOLOGY**
- Segmental brush rollers for easy maintenance
 - Re-greaseable triple sealed roller bearings for extended life
 - Water recycling system & pump - if required
 - Bespoke brush design to suit your application
 - Automatic greasing system can be fitted
 - Quick release roller drive coupling



**FRESH & RECYCLED WATER
SPRAY BARS**



Suspending the barrel on Kevlar belts eliminates the need for troublesome trunnion wheels. All brush rollers are easily accessible from the fully open side panel & due to the unique cartridge roller drive system they can be removed within minutes for service or maintenance. A further advantage of this drive configuration is the ability to run the barrel in either direction effectively extending the working life of the brushes.

Water recycling systems with rotary cleaning screen & pump are also available to mount under the polisher.

All areas inside the polisher are easily accessible for hygiene and cleaning.



*Fully open side panel gives
EASY ACCESS FOR BRUSH
ROLLER REMOVAL*